



# Oxfordshire Ladies' County Golf Association (OLCGA)

## Children and Young People Safeguarding Policy and Procedures

### Contents

	<b>Page</b>
<b>Safeguarding Policy Statement</b>	2 & 3
<b>Procedures:</b>	
<b>1.</b> Recruitment and training	3 & 4
<b>2.</b> Complaints, concerns, and allegations	4 & 5
Flow Charts	6 & 7
<b>3.</b> Emergencies and incidents	8
<b>4.</b> Supervision	9
<b>5.</b> Good Practice Guidelines	9 - 11
<b>6.</b> Useful Contacts	12
<b>7.</b> Appendices - Supporting Documents	
1. Volunteer Recruitment Form	
2. Self-disclosure	
3. References	
4. Code of Conduct for Coaches and Volunteers	
5. Code of Conduct for Young Golfers	
6. Code of Conduct for Parents/Guardians	
7. Managing Challenging Behaviour	
8. Incident Report Form	
9. Accident Report Form	
10. Junior Profile and Parental Consent	
11. Parental Guidance	
12. Managing Young People on Away Trips	
13. Social Media Guidance	
14. Whistleblowing Policy	
15. England Golf DBS Flowchart	
16. Categories of Child Abuse	
17. Safeguarding Children and Young People – a short guide	
18. Photography Policy	
19. Anti-Bullying Policy	

# Children and Young People Safeguarding Policy

## INTRODUCTION

Whilst children and young people are participating in golf activities in our care, **OLCGA** has a responsibility to ensure their safety and wellbeing.

**OLCGA** recognises the policies of the National Governing Body, as set out in the "England Golf Safeguarding Children and Young People Policy and Procedures".

The policy and supporting procedures set out a framework to fulfil our commitment to good practice and the protection of children in our care.

## KEY PRINCIPLES

- The welfare of children is paramount.
- A child is defined by law in England and Wales as a person under the age of 18 years.
- All children, regardless of their Age, Race, Religion or Belief, Disability, Gender identity or Sexual Orientation, have the right to protection from abuse.
- All concerns and allegations of abuse and poor practice will be taken seriously and responded to swiftly and appropriately.
- All children have the right to be safe.
- All children have the right to be treated with dignity and respect.
- **OLCGA** will work with children, their parents/guardians and external organisations to safeguard the welfare of children participating in golf.
- We recognise the authority of the statutory agencies and are committed to complying with Local Safeguarding Children Board Guidelines (LSCB), Working Together under the Children Act 2004, and any legislation and statutory guidance that supersedes these.
- **OLCGA** is committed to working in partnership with other key UK Golf bodies to continually improve and to promote safeguarding initiatives across the sport.
- **OLCGA** owes a legal duty of care to children on their premises or engaged in their activities. That duty is to take reasonable care to ensure their reasonable safety and the duty is higher than it would be for adults.

## OBJECTIVES

**OLCGA** aims to:

- Provide a safe environment for children and young people participating in golfing activities and try to ensure that they enjoy the experience.
- Ensure robust systems are in place to manage any concerns or allegations.
- Support adults (staff, volunteers, PGA Professionals, coaches, members, and visitors) to understand their roles and responsibilities regarding their duty of care and protection of children.
- Provide appropriate level training, support and resources for staff, volunteers & coaches to make informed and confident responses to specific safeguarding issues and fulfill their role effectively.
- Ensure that children and their parents/guardians are informed and consulted and, where appropriate, fully involved in decisions that affect them.

- Reassure parents and guardians that all children and young people will receive the best care possible whilst participating in county activities and communicate Policy and Procedure to them through website/letter/consents.

## **RESPONSIBILITIES AND IMPLEMENTATION**

**OLCGA** will seek to promote the principles of safeguarding children by:

- Reviewing their policy and procedures every three years or whenever there is a major change in legislation. Guidance from England Golf will be sought as part of the review process.
- Conducting a risk assessment of county activities about safeguarding and take appropriate action to address the identified issues within suitable timescales.
- Using appropriate recruitment procedures to assess the suitability of volunteers and staff working with children and young people in line with guidance from England Golf.
- Following National Governing Body (NGB) procedures to report concerns and allegations about the behaviour of adults and ensuring that all staff, volunteers, parents and children are aware of these procedures.
- Directing staff, volunteers & coaches to appropriate safeguarding training and learning opportunities, where this is appropriate to their role.

## **RECRUITMENT AND TRAINING**

**OLCGA** will endeavour to ensure that all volunteers and coaches working with children and young people are appropriate and suitable to do so, and that they have all the information they require to undertake their job effectively and appropriately.

Each role which involves an element of responsibility regarding children, particularly those involving the regular supervision of children, whether voluntary or paid, should be assessed by the recruiting body to establish which qualifications, checks and other requirements are necessary. These will include the following:

- A recruitment form (**Appendix 1**)
- A self-disclosure form (**Appendix 2**)
- References from 2 people (**Appendix 3**)
- A signed Code of Conduct (**Appendix 4**)
- A Disclosure & Barring Service (DBS) check on people involved in 'regulated activity' with children (**Guidance on Regulated Activity & DBS-Appendix 16**)

Details of the requirements and the qualifications and checks of individuals will be recorded by the County Welfare Officer who will also hold copies of the necessary Safeguarding and Protecting Children (SPC) certificates. The nominated person will possess all relevant and appropriate contact details of all volunteers and other relevant bodies.

All volunteers & coaches will be offered access to appropriate child protection training. **OLCGA** recommends attendance at the UK Coaching Safeguarding and Protecting Children (SPC) workshop and will ensure that all volunteers and staff who have significant contact with children attend. An online UK Coaching refresher course should be completed and repeated every three years for those involved in "Regulated Activity."

All volunteers & coaches working with children and young people will be asked to read and become familiar with **OLCGA** Safeguarding Policy and Procedures.

All volunteers & coaches involved with children and young people will be asked to read the **OLCGA** Code of Conduct relevant to their role, and sign to indicate their understanding and agreement to act in accordance with the code. The code is linked to **OLCGA's** Disciplinary Procedures. **(Codes of Conduct-Appendix 4,5,6)**

**OLCGA** are committed to the fact that every child and participant in golf should be afforded the right to thrive through being involved in sporting activity for life, in an enjoyable, safe environment, and be protected from harm. **OLCGA** acknowledge the additional vulnerability of some groups of children (e.g. disabled, looked after children, those with communication differences). **OLCGA** will ensure that the environment is appropriate for the child and tailored to their needs so that they have a positive experience of their sport without risk of harm.

## **COMPLAINTS, CONCERNS AND ALLEGATIONS**

- 1** If a player, parent/guardian, coach or volunteer has a concern about the welfare of a child, or the conduct of another child/young person or an adult (whether they are a parent, coach, member, or otherwise), these concerns should be brought to the attention of the County Welfare Officer without delay. The person reporting the concern is not required to decide whether abuse has occurred, but simply has a duty to pass their concerns and any relevant information to the Welfare Officer. Please refer to Flowcharts 1 & 2 for further details (see below).
- 2** All concerns will be treated in confidence. Details should only be shared on a "need to know" basis with those who can help with the management of the concern.
- 3** Concerns will be recorded on an Incident Report Form and sent to the England Golf Lead Safeguarding Officer and retained confidentially. *The England Golf Lead Safeguarding Officer will assist with completion of this form if required, Tel: 01526 351824. (Incident Report Form-Appendix 8)*
- 4** **OLCGA** will work with England Golf and other external agencies to take appropriate action where concerns relate to potential abuse or serious poor practice. **OLCGA** disciplinary procedures will be applied and followed where possible.

In the event of a child making a disclosure of any type of abuse, the following guidance is given:

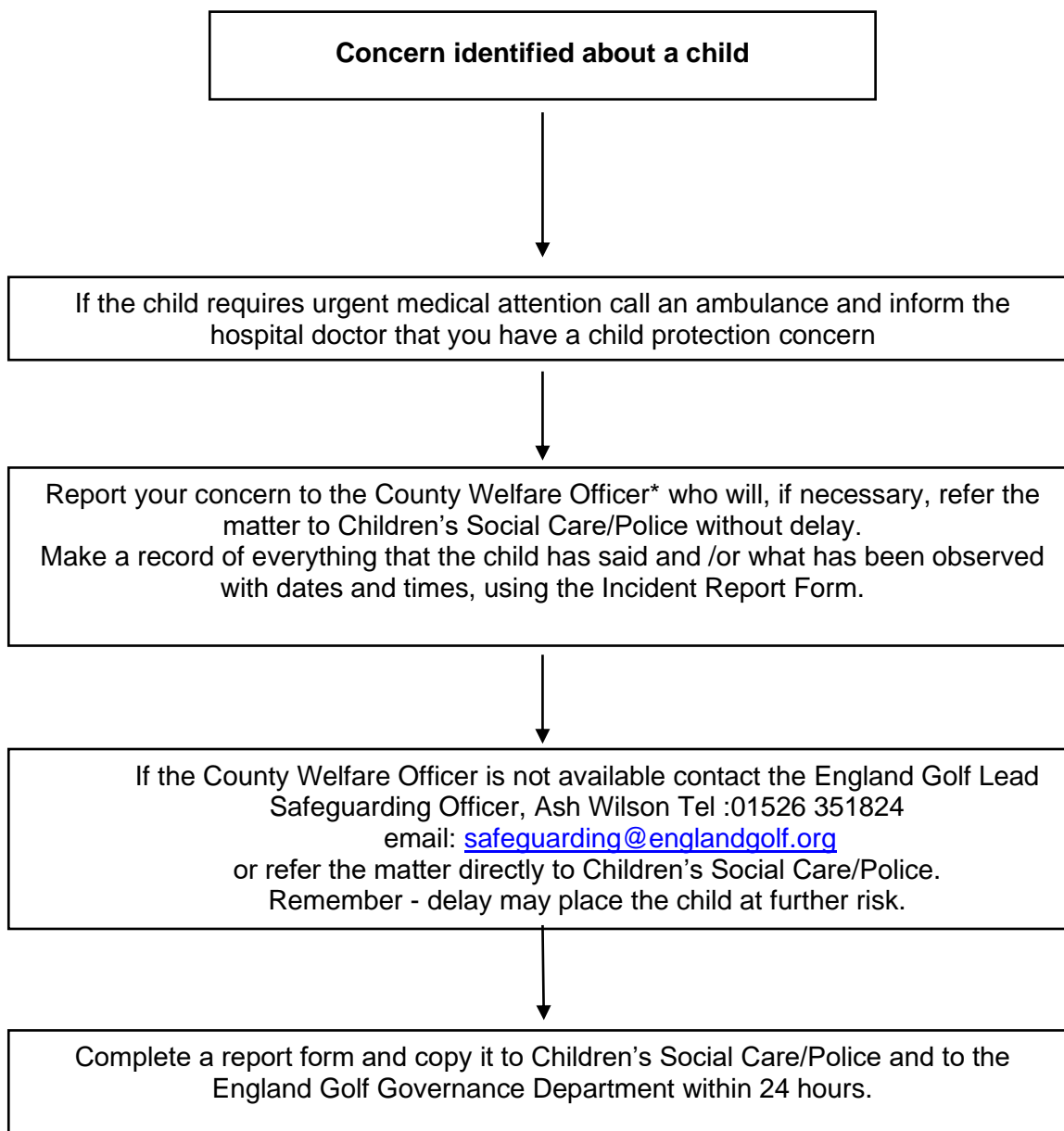
- Reassure them that they have done the right thing to share the information.
- Listen carefully.
- Do not make promises that cannot be kept, such as promising not to tell anyone else.
- Do not seek to actively question the child or lead them in any way to disclose more information than they are comfortably able to: this may compromise any future action. Only ask to clarify your understanding where needed e.g. Can you tell me what you mean by the word xxxxx?
- Record what the child has said as soon as possible on an incident report form.
- You should explain open & honestly to children, young people, and families at the outset about what, why and how information will, or could be, shared and seek their agreement.
- Parents or guardians should be informed if the allegation does not involve them.

**5** The NSPCC Helpline is available to discuss concerns regarding poor practice and abuse in confidence with members of the public who need support. Those with concerns are encouraged to use this service. The Helpline number is 0808 800 5000.

**6** Safeguarding children and young people requires everyone to be committed to the highest possible standards of openness, integrity, and accountability. **OLCGA** supports an environment where coaches, volunteers, parents & guardians, and the public are encouraged to raise safeguarding and child protection concerns. Anyone who reported a legitimate concern to the organisation (even if their concerns subsequently appear to be unfounded) will be supported. All concerns will be taken seriously. **(Whistleblowing Policy- Appendix 15)**

## FLOWCHART 1

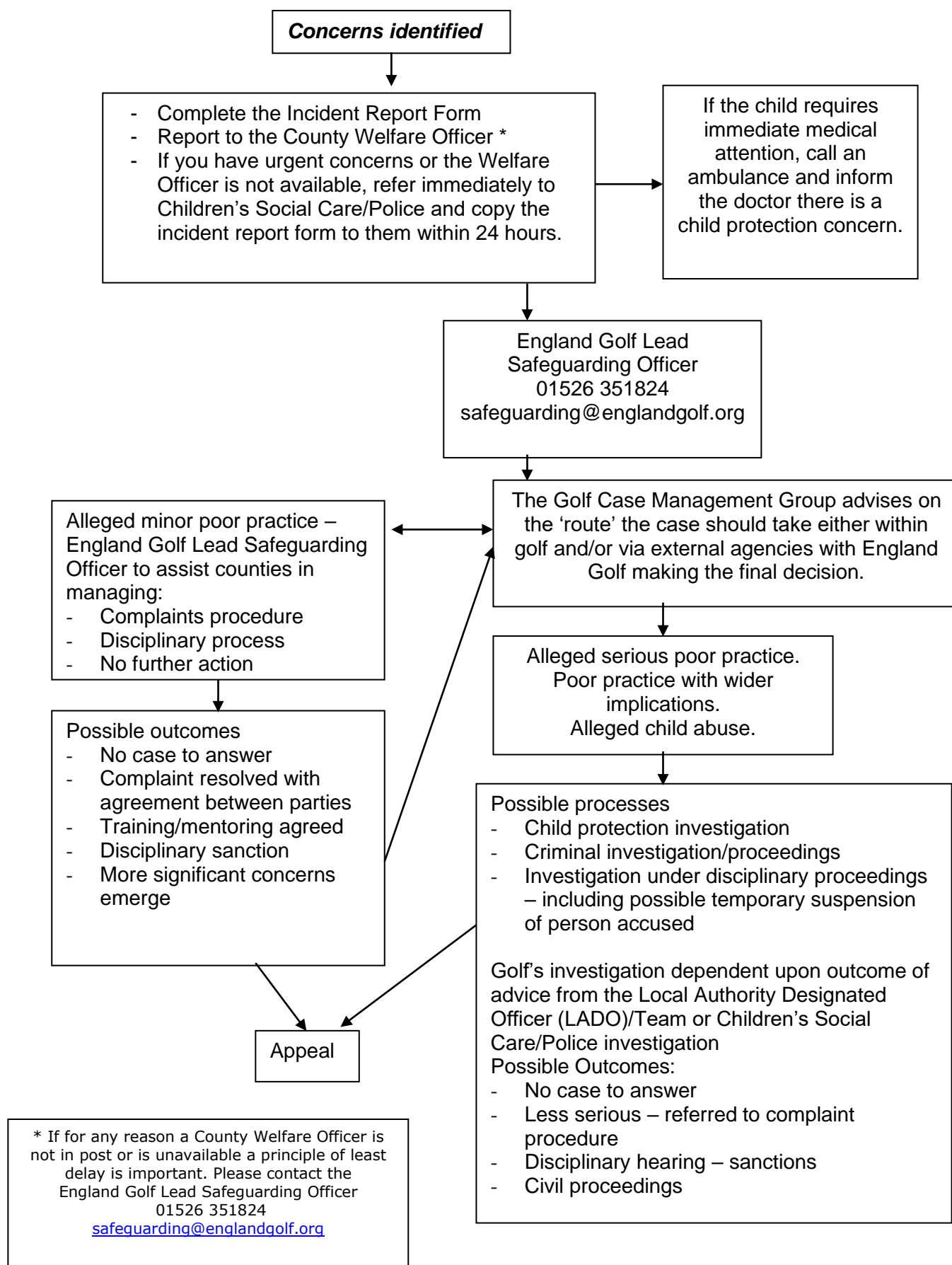
### What to do if you are worried about what is happening to a child outside of the County (but the concern is identified through the child's involvement in golf)



\* If for any reason a County Welfare Officer is not in post or is unavailable a principle of least delay is important. Please contact the  
England Golf Lead Safeguarding Officer  
Ash Wilson 01526 351824  
[safeguarding@englandgolf.org](mailto:safeguarding@englandgolf.org)

## FLOW CHART 2

**What to do if you are worried about the behaviour of any member, parent/guardian, volunteer, Professional, coach or official in golf or affiliated organisations**



## EMERGENCIES AND INCIDENTS

- 1** Parental Consent Forms will be obtained and retained by **OLCGA** for all children who are participating in events or activities, or attending coaching organised by the county. These forms will be treated in confidence and only shared with those who require the information they contain to perform their role effectively. **(Junior Profile and Parental Consent -Appendix 10)**
- 2** In the event of a child requiring medical attention:
  - The parents will be contacted immediately.
  - In the event of failure to contact parents, the alternative emergency contacts will be used.
  - The consent form will be consulted to establish whether parents have given their consent for a county representative to act in loco parentis.
  - An adult county representative will accompany the child to seek medical attention, if appropriate, ensuring that they take the consent form with them.
  - A record of the action taken will be made and retained by a county representative.
- 3** Where a parent is late in collecting their child the following procedure will apply:
  - Attempt to contact the parent/carer using the contact details on the Parental Consent Form
  - Attempt to contact the first, then the second emergency contact nominated on the Consent Form.
  - Wait with the young person(s) at the venue with, wherever possible, other staff/volunteers or parents.
  - If no one is reachable, contact the County Welfare Officer for advice.
  - If all attempts to make contact fail, consideration should be given to contacting the police for their advice.

Volunteers and coaches should try to avoid:

  - Taking the child home or to another location without consent.
  - Asking the child to wait in a vehicle or the venue with them alone.
  - Sending the child home with another person without permission.

## SUPERVISION

- 1** During coaching sessions, coaches should conduct a risk assessment to inform decision making about appropriate supervision levels. Regardless of the recommended ratio of adults to participants, it is recommended that a minimum of two adults should be present. This ensures at least basic cover in the event of something impacting on the availability of one of the adults during the activity.



- 2 Parents may be encouraged to stay for coaching/competitions & other events where their children are of an age where a greater level of parental supervision is required.
- 3 Wherever possible adults will avoid changing or showering at the same time as children, but parents will be made aware that with limited changing room space there will be occasions when adults and children may need to share the facilities.
- 4 Parents should be aware that if children are left at a venue unsupervised, other than to attend specific coaching sessions, competitions, or other organised events, the county cannot accept supervisory responsibility.
- 5 Special arrangements will be made for away trips. Parents will receive full information about arrangements for any such trip and will be required to provide their consent for their child's participation. **(Managing Young People on Away Trips-Appendix 13)**

## **GOOD PRACTICE GUIDELINES**

### **1 Behaviour of adults and children**

Adults who work with children are placed in a position of trust in relation to children, and therefore it is important they behave appropriately and provide a strong positive role model for children, both to protect children and those working with children from false allegations of poor practice. Codes of conduct will be issued to junior members & adults working with them to promote good practice.

**OLCGA** requires that all coaches and volunteers working with children and young people adhere to the standards set out in the Code of Conduct relevant to their role. Similarly, children are expected to follow their own Code of Conduct to ensure the enjoyment of all participants and assist the county in ensuring their welfare is safeguarded.

**OLCGA** requires that coaches and volunteers working with children adhere to the guidelines on Managing Challenging Behaviour. **(Managing Challenging Behaviour-Appendix 7)**

Parents and guardians should also work together with the county to ensure that the welfare of all children is safeguarded. A sheet on "Parental Guidance" is provided to assist them in understanding how they can best assist the county **(Parental Guidance-Appendix 12)**

### **2 Adults and Children playing golf together**

One of the reasons for the popularity of golf is that the game is not restricted by ability, age, or gender. Responsible interaction between adults and children helps bring mutual respect and understanding and will be encouraged as part of county activities. Adults should always be aware however that age related differences do exist and conduct themselves in a manner that both recognises this and prioritises the welfare of any children involved.

### 3 **Physical Contact**

Physical contact with children by coaches or volunteers should always be intended to meet the needs of the child and the sport, not the adult. That is, to develop golf technique, to protect the child from injury, to provide first aid or treat an injury. It should always take place in an open environment, and should not, as a general principle, be made gratuitously or unnecessarily.

### 4 **Transport**

The county believes it is primarily the responsibility of parents/guardians to transport their child/children to and from events. It is not the responsibility of county volunteers or coaches to transport children and young people to and from events, activities, tournaments or matches.

The county may arrange for transport in exceptional circumstances, such as team events. Where this is the case, the written permission of the parents of the relevant children will be sought. The drivers used will be checked for their suitability to transport and supervise children **(see Section 1 Recruitment and Training)** and their insurance arrangements verified.

Children and young people are often involved in competition. When taking young people away, consideration and planning needs to be paramount to ensure the duty of care for the young people within the team is fulfilled.

### 5 **Photography/ Videoing**

Permission will be sought from parents prior to the publication or use of any video or photographic images of their child, for instance in newspapers, websites or for coaching purposes. The personal details of the child will not be used in any promotional material. **(Photography Consent-Junior Profile Form)**

Any press/official photographers attending events will be required to seek permission from the county before taking photographs and permission of the parents to use the images. **(Photography Policy – Appendix 20)**

### 6 **Social Media**

Social media provides unique opportunities for the county to engage and develop relationships with people in a creative and dynamic forum where users are active participants. It is important that all volunteers, coaches, officials/referees, or anyone working on behalf of the county are aware of the county Social Media policy **(Social Media Guidance–Appendix 14)**

### 7 **Anti-Bullying Procedures**

We believe that every effort must be made to eradicate bullying in all its forms.

Bullying can be difficult to define and can take many forms which can be categorised as -

- Physical – hitting, kicking, theft.
- Verbal – homophobic or racist remarks, threats, name calling.
- Emotional – isolating an individual from activities or a group.

All forms of bullying include -

- Deliberate hostility & aggression towards an individual(s)
- A victim who is weaker and less powerful than the bully or bullies
- An outcome which is always painful & distressing for the victim

Bullying behaviour may also include -

- Other forms of violence
- Sarcasm, spreading rumours, persistent teasing.
- Tormenting, ridiculing, humiliation
- Racial taunts, graffiti, gestures
- Unwanted physical contact or abusive or offensive comments of a sexual nature.

The county and its volunteers & coaches will not tolerate bullying in any of its forms during county matches, competitions, coaching or at any other time.

### **(Anti-Bullying Policy -Appendix 21)**

We will:

- Provide a point of contact where those being bullied can report their concerns in confidence – The County Welfare Officer.
- Take the problem seriously.
- Investigate all incidents and accusations of bullying.
- Talk to bullies and their victims separately along with their parents/guardian.
- Impose sanctions where appropriate.
- Keep a written record of all incidents referred to England Golf and the action taken.
- Have discussions about bullying and why it matters.

## **8 Confidentiality**

Details of all juniors will be kept securely on google drive and will not be shared with a third party without parent/guardian consent.

All concerns/allegations will be dealt with confidentially by the county and information will only be shared on a need to know basis, either internally or externally depending on the nature/seriousness of the concern/allegation.

## **9 Changing rooms**

The changing rooms are used by all members & visitors. Juniors will only be supervised if needed at county organised events. Parents will be made aware that adults use the changing rooms throughout the day for changing & showering. Where a parent/guardian does not consent to their child accessing the changing rooms, it is their responsibility to either supervise the child while in the changing rooms or ensure that they do not use them.

## 6. Useful Contacts

Golf Contacts		
Name	Address	Number & Email
<b>County Welfare Officer – Heather Slevin</b>	<b>N/A</b>	01295 780513 cwo.olcga@gmail.com
<b>England Golf Lead Safeguarding Officer - Petra Duvanna</b>  <b>Case Officer – Craig Scott</b>	<b>England Golf National Golf Centre The Broadway Woodhall Spa Lincolnshire LN10 6PU</b>	01526 351824  safeguarding@englandgolf.org
<b>County Secretary – Linda Fisher</b>	<b>N/A</b>	07771 864569 secretaryoxonlcga@gmail.com

Local Contacts		
<b>MASH</b> (multi-agency safeguarding hub for Oxfordshire) Emergency Duty Team		0345 050 7666 (office hours) 0800 833 408 (outside office hours)  mash-children@oxfordshire.gov.uk
Local Authority Designated Officer		01865 810603 (office hours)
Samaritans		08457 90 90 90 or 116 123
<b>Thames Valley Police</b> Child Protection Teams In an emergency		101 999

National Contacts		
<b>The NSPCC</b> 24 Hour Helpline	National Centre 42 Curtain Road London EC2A 3NH	Tel: 0808 800 5000  help@nspcc.org.uk
<b>Childline UK</b>	Freepost 1111 London N1 0BR	Tel: 0800 1111
NSPCC Child Protection in Sport Unit	3 Gilmour Close Beaumont Leys Leicester LE4 1EZ	Tel: 0116 234 7278  cpsu@nspcc.org.uk
NSPCC Whistleblowing Helpline		0800 028 0285

## **7. Appendices - Supporting Documents:**

1. Volunteer Recruitment Form – **pages 14-15**
2. Self-disclosure – **pages 16-17**
3. References – **page 18**
4. Code of Conduct for Coaches and Volunteers – **pages 19-20**
5. Code of Conduct for Young Golfers – **page 21**
6. Code of Conduct for Parents & Guardians – **pages 22-23**
7. Managing Challenging Behaviour – **pages 24-26**
8. Incident Report Form – **pages 27-28**
9. Accident Report Form – **pages 29-30**
10. Junior Profile and Parental Consent Forms – **page 31**
11. Parental Guidance – **pages 32-33**
12. Managing Young People on Away Trips – **pages 34-35**
13. Social Media Guidance – **pages 36-37**
14. Whistleblowing Policy – **pages 38-39**
15. England Golf DBS Flowchart – **page 40**
16. Categories of Child Abuse - **pages 41-42**
17. Safeguarding Children and Young People – a short guide – **pages 43-44**
18. Photography Policy – **page 45**
19. Anti-Bullying Policy – **pages 46-47**

## Appendix 1

## Volunteer Recruitment Form - OLCGA

<p><b>Position recruited for:</b></p>
<p><b>Personal Details</b></p> <p>Title: Mr/Mrs/Miss/Dr/Other (please specify) _____</p> <p>Full Name: _____</p> <p>Any previous surname: _____</p> <p>Date and place of birth: _____</p>
<p>Present Address: _____</p> <p>_____</p> <p>Post Code: _____</p> <p>Telephone Numbers: _____</p> <p>Email address: _____</p>
<p>Current Occupation (if applicable): _____</p> <p>Name and address of Organisation: _____</p> <p>_____</p> <p>Role: _____</p> <p>Start Date: _____</p>
<p><b>Relevant Experience including any previous experience of working with children and young people:</b></p>

**Reasons for volunteering:**
**References:**

Please provide the names and addresses of two people who know you well, who are not related to you and whom we can contact to obtain a reference:

**Name:**
**Address:**
**Telephone Number:**
**Name:**
**Address:**
**Telephone Number:**
**Data Protection Notification:**

The information you have provided in completing this form will be used to process your application. **OLCGA** will keep the information you have supplied confidential and will not divulge it to third parties, except where required by law, or where we have retained the services of a third party representative to act on your/our behalf.

**Authorisation:**

I have read the Data Protection notification and understand and agree to the use of my personal data in accordance with the Data Protection Act 2018, GDPR and all relevant data protection legislation.

**Signed:**
**Date:**
**Declaration:**

I confirm that the information I have provided is correct and that any false or misleading information may lead to the termination of my appointment.

**Signed:**
**Date:**

## Appendix 2

### OLCGA - Self-Disclosure Form

To be completed at the same time as the recruitment form:

#### Private and Confidential

For roles involving contact with children (under 18 years).  
All information will be treated as confidential and managed in accordance with relevant data protection legislation and guidance. You have a right of access to information held on you under the Data Protection Act 2018.

#### Part One

<i>For completion by the county:</i>	
Name of Volunteer:	
Address and Postcode:	
Telephone/Mobile No:	
Date of Birth:	
Gender:	Male / Female
Identification ( <i>tick box below</i> ):	
<input type="checkbox"/>	I confirm that I have seen identification documents relating to this person, and I confirm to the best of my ability that these are accurate.
<b>Either</b>	
UK Passport Number and Issuing Office	
UK Driving Licence Number ( <i>with picture</i> )	
<b>Plus</b>	
National Insurance Card or current Work Permit Number	
<b>Signature of county officer:</b>	
<b>Print name:</b>	
<b>Date:</b>	



## Part Two

**Note:** If the role you have applied for involves frequent or regular contact with or responsibility for children you will be required to provide a valid DBS (Disclosure and Barring Service) certificate which will provide details of criminal convictions; this may also include a Barring List check depending on the nature of the role (see organisational guidance about eligibility for DBS checks).

<i>For completion by the individual (named in Part one):</i>	
Have you ever been known to any Children's Services department as being a risk or potential risk to children?	YES / NO (if Yes, please provide further information below):
Have you been the subject of any disciplinary investigation and/or sanction by any organisation due to concerns about your behaviour towards children?	YES / NO (if Yes, please provide further information)
Confirmation of Declaration (tick box below)	
<input type="checkbox"/>	I agree that the information provided here may be processed in connection with recruitment purposes. I understand this offer of recruitment may be withdrawn or dismissal may result if information is not disclosed by me and subsequently comes to the organisation's attention.
<input type="checkbox"/>	In accordance with the organisation's procedures if required I agree to provide a valid DBS certificate and consent to the organisation clarifying any information provided on the disclosure with the agencies providing it.
<input type="checkbox"/>	I agree to inform the organisation within 24 hours if I am subsequently investigated by any agency or organisation in relation to concerns about my behaviour towards children or young people.
<input type="checkbox"/>	I understand that the information contained on this form, the results of the DBS check and information supplied by third parties may be supplied by the organisation to other persons or organisations in circumstances where this is considered necessary to safeguard other children.
<b>Signature:</b>	
<b>Print name:</b>	
<b>Date:</b>	

<b>County Welfare Officer</b> I have seen and checked the above responses, if any of the boxes above are ticked YES, I have referred this form to England Golf Governance Department for a risk assessment and advice.	
<b>Signed:</b>	<b>Date:</b>

### Appendix 3

#### OLCGA - Reference form

(Name) \_\_\_\_\_

has expressed an interest in becoming a volunteer and has given your name as a referee.

As this post involves substantial access to children and as an organisation committed to safeguarding children, it is important that if you have any reason to be concerned about this applicant that you do not complete the following form, but please contact me on:

Telephone: \_\_\_\_\_

Name: \_\_\_\_\_

Organisation: Oxfordshire Ladies County Golf Association

Any information disclosed in this reference will be treated in confidence and in accordance with relevant legislation and guidance and will only be shared with the person conducting the assessment of a candidate's suitability for a position if he or she is offered the position in question.

• **How long have you known the person?**

• **In what capacity?**

• **What attributes does this person have which would make him/her suited to a role working with children?**

• **How would you describe his/her personality?**

Signed: \_\_\_\_\_

Date: \_\_\_\_\_

## Appendix 4



### Oxfordshire Ladies' County Golf Association

#### Code of Conduct for coaches & volunteers

- Respect the rights, dignity and worth of every person within the context of golf.
- Treat everyone equally and do not discriminate on the grounds of age, gender, race, religion or belief, sexual orientation, or disability.
- If you see any form of discrimination, do not condone it or allow it to go unchallenged.
- Place the well-being and safety of the young person above the development of performance.
- Develop an appropriate working relationship with young people, based on mutual trust and respect.
- Ensure that physical contact is appropriate and necessary and is carried out within recommended guidelines with the young person's full consent and approval.
- Always work in an open environment (e.g. avoid private or unobserved situations and encourage an open environment)
- Do not engage in any form of sexually related contact with a young player. This is strictly forbidden as is sexual innuendo, flirting or inappropriate gestures and terms.
- You should not have regular contact outside your county role with the juniors and should not engage in regular communication through text, email or social network sites.
- Know and understand **OLCGA's** Child Safeguarding Policies and Procedures
- Respect young people's opinions when making decisions about their participation in golf.
- Inform players and parents of the requirements of golf.
- Be aware of and report any conflict of interest as soon as it becomes apparent.
- Display high standards of language, manner, punctuality, preparation, and presentation.
- Do not smoke, drink, or use recreational drugs while actively working with young people in the county. This reflects a negative image and could compromise the safety of the young people.
- Do not give young people alcohol when they are under the care of the county.

- Hold relevant qualifications and insurance cover. All staff, volunteers & coaches who work regularly with children must have current DBS clearance, approved by England Golf Governance Department
- Ensure the activities are appropriate for the age, maturity, experience, and ability of the individual
- Promote the positive aspects of golf e.g. fair play
- Display high standards of behaviour and appearance.
- Follow County Procedures & good practice guidelines.
- Ensure that you attend appropriate training to keep up to date with your role and the welfare of young people.
- Report any concerns you may have in relation to a child or the behaviour of an adult, following reporting procedures laid down by **OLCGA**.

**Signed:**

**Date:**

**PRINT NAME:**

## Appendix 5



### Oxfordshire Ladies' County Golf Association

#### Code of Conduct for Young Golfers

As a young golfer taking part in an **OLCGA** activity, you should:

- Help create and maintain an environment free of fear and harassment.
- Demonstrate fair play and apply golf's standards both on and off the course.
- Understand that you have the right to be treated as an individual
- Respect the advice that you receive.
- Treat others as you would wish to be treated yourself.
- Respect other people and their differences
- Look out for yourself and for the welfare of others.
- Speak out (to your parents or a county representative) if you consider that you or others have been poorly treated.
- Be organised and on time.
- Tell someone in authority if you are leaving the venue.
- Accept that these guidelines are in place for the well-being of all concerned.
- Treat organisers and coaches with respect.
- Observe instructions or restrictions requested by the adults looking after you.

You should not take part in any irresponsible, abusive, inappropriate, or illegal behaviour which includes:

- Smoking
- Using foul language
- Publicly using critical or disrespectful descriptions of others either in person or through text, email, or social network sites
- Consuming alcohol, illegal performance-enhancing drugs, or stimulants

Child Signature \_\_\_\_\_

Print Name \_\_\_\_\_

Parent/Guardian Signature \_\_\_\_\_

Print Name \_\_\_\_\_

## Appendix 6



### Oxfordshire Ladies' County Golf Association

#### Code of Conduct for Parents/Guardians of Young Golfers

As parents/guardian you are expected to:

- Positively reinforce your child and show an interest in their chosen activity.
- Do not place your child under pressure or push them in to activities they do not want to do.
- Be realistic and supportive.
- Promote your child's participation in playing sport for fun.
- Complete and return the Player Profile Form and Consents pertaining to your child's participation in activities at **OLCGA**.
- Report and update **OLCGA** with any changes relevant to your child's health and wellbeing
- Deliver and collect your child punctually before and after coaching sessions/competitions.
- Ensure your child has clothing and kit appropriate to the weather conditions.
- Ensure your child has appropriate equipment, plus adequate food, and drink.
- Ensure that your child understands the rules of Golf.
- Teach your child that they can only do their best.
- Ensure that your child understands their Code of Conduct.
- Behave responsibly at **OLCGA** activities and on the golf course; do not embarrass your child.
- Show appreciation and support the coaches and volunteers within **OLCGA**.
- Accept the decision and judgement of the officials during events and competition.

As a parents/guardian you have the right to:

- Be assured that your child is safeguarded during their participation in the sport.
- Be informed of problems or concerns relating to your child.
- Be informed if your child is injured.
- Have consent sought for issues such as trips and photography.
- Contribute to the decisions of the county.
- Have any concerns about any aspect of your child's welfare listened to and responded to

Any breaches of this code of conduct will be dealt with immediately by the County Junior Organiser, on behalf of **OLCGA**. Persistent concerns or breaches may result in you being asked not to attend games if your attendance is considered detrimental to the welfare of young participants.

The ultimate action should a parent/carer continue to breach the code of conduct may be **OLCGA** regrettably asking your child to leave the session, event, or county team.

**Signed:**

**Date:**

**PRINT NAME:**

## Appendix 7



### Oxfordshire Ladies' Golf Association

#### Challenging Behaviour

Volunteers who deliver sports activities to children may, on occasions, be required to deal with a child's challenging behaviour.

These guidelines aim to promote good practice and are based on the following principles:

- The welfare of the child is the paramount consideration.
- Children must never be subject to any form of treatment that is harmful, abusive, humiliating or degrading.
- The specific needs a child may have (e.g. communication, behaviour management, comprehension and so on) should be discussed with their parent/carer and where appropriate the child, before activities start. Where appropriate it may be helpful to record the details of any agreed plan or approach and provide copies to all parties.
- Every child should be supported to participate. Consideration to exclude a child from activities should apply only as a last resort and after all efforts to address any challenge have been exhausted, in exceptional circumstances where the safety of that child or of other children cannot be maintained.

#### Planning Activities:

Planning for activities should include consideration of whether any child involved may need additional support or supervision to participate safely. This should address:

- Assessment of additional risk associated with the child's behaviour.
- Appropriate supervision ratios and whether numbers of adults should be increased.
- Information sharing for all volunteers on managing any challenging behaviour to ensure a consistent approach.
- Specialist expertise or support that may be needed from carers or outside agencies. This is particularly relevant where it is identified that a child may need a level of physical intervention to participate safely. (see below)

#### Agreeing Acceptable and Unacceptable Behaviours:

Volunteers, children, young people, and parents/guardian should be involved in developing an agreement about:



- what constitutes acceptable and unacceptable behaviour (code of conduct)
- the range of sanctions which may be applied in response to unacceptable behaviour.

This can be done at the start of the season, in advance of a trip away from home or as part of a welcome session at a residential camp. It should involve the views of children and young people to encourage better buy in and understanding.

Where challenges are anticipated in light, for example of a child's impairment or other medical condition, a clear plan/agreement should be established and written down. Ensure that parents/carers understand the expectations on their children and ask them to reinforce this ahead of any trip or activity.

### **Managing Challenging Behaviour:**

In responding to challenging behaviour, the response should always be:

- Proportionate to the actions you are managing.
- Imposed as soon as is practicable.
- Fully explained to the child and their parents/carers.

In dealing with children who display negative or challenging behaviours, staff and volunteers might consider the following options:

- Time out - from the activity, group, or individual work.
- Reparation - the act or process of making amends.
- Restitution - the act of giving something back.
- Behavioural reinforcement - rewards for good behaviour, consequences for negative behaviour.
- De-escalation of the situation - talking with the child and distracting them from challenging behaviour.
- Increased supervision by volunteers.
- Use of individual 'contracts' or agreements for the child's future or continued participation.
- Sanctions or consequences e.g. missing an outing or match
- Seeking additional/specialist support through working in partnership with other agencies.
- Temporary or permanent exclusion.

The following should never be permitted as a means of managing a child's behaviour:

- Physical punishment or the threat of such.
- Refusal to speak to or interact with the child.
- Being deprived of food, water, access to changing facilities or toilets or other essential facilities.
- Verbal intimidation, ridicule, or humiliation.

Volunteers should consider the risks associated with employing physical intervention compared with the risks of not employing physical intervention.

The use of physical intervention should always:

- Be avoided unless it is necessary to prevent a child injuring themselves or others or causing serious damage to property.
- Aim to achieve an outcome that is in the best interests of the child whose behaviour is of immediate concern.
- Form part of a broader approach to the management of challenging behaviour.
- Be the result of conscious decision-making and not a reaction to an adult's frustration.
- Employ the minimum force needed to avert injury to a person or serious damage to property - applied for the shortest period of time.
- Used only after all other strategies have been exhausted.
- Be recorded as soon as possible using the appropriate organisational reporting form and procedure.

Parents should always be informed following an incident where a coach/volunteer has had to physically intervene with their particular child.

Physical intervention must not:

- Involve contact with buttocks, genitals and breasts.
- Be used as a form of punishment.
- Involve inflicting pain.

### **Views of the child:**

A timely de-brief for volunteers, the child and parents should always take place in a calm environment following an incident where physical intervention has been used. Even children who have not directly been involved in the situation may need to talk about what they have witnessed.

There should also be a discussion with the child and parents about the child's needs and continued safe participation in the group or activity.

## Appendix 8

### OLCGA - Incident Report Form

Recorder's Name:	
Address:	
Post Code:	Telephone No:

Child's Name:	
Address:	
Post Code:	Telephone No:

Complainant's Name:	
Address:	
Post Code:	Telephone No:

Details of the allegations: [date; time; location; and nature of the incident.]
Additional information: [witnesses; corroborative statements; etc.]

<p>England Golf Governance department notified (01526 351824)</p> <p>Case Number (if allocated):</p> <p>Name of person spoken to:</p> <p>Date: _____ Time: _____</p>	
<p>Action taken:</p>   <p>Date: _____ Time: _____</p>	
<p>Signature of Recorder:</p>  <p>Signature of Complainant:</p>	
<p><b>Data protection:</b></p> <p><b>OLCGA</b> and England Golf Governance Department may use the information in this form (together with other information they obtain as a result of any investigation) to investigate the alleged incident and to take whatever action is deemed appropriate, in accordance with their Children and Young People Safeguarding Policy and Procedures.</p> <p>Strict confidentiality will be maintained, and information will only be shared on a "need to know" basis in the interests of safeguarding. This may involve disclosing certain information to a few organisations and individuals including relevant clubs and County bodies, individuals that are the subject of an investigation and/or Statutory agencies such as the Police and Children's Social Care.</p>	

## Appendix 9

### OLCGA - Accident Report Form

Recorder's Name:	
Address:	
Post Code:	Telephone No:
Name of Injured Person [s]:	
Address:	
Post Code:	Telephone No:
Nature of Injury Sustained:	
Where did the Accident occur: [date; time; location; and nature of the accident.]	
How did the Accident occur: [names; telephone numbers; etc.]	
Were there any witnesses to the Accident: [names; statements, etc.]	
What action was taken: [treatment administered, by whom, etc.]	
Were any other Agencies involved: [e.g. Ambulance service?]	

Have the Parents / Guardian been contacted? YES NO [Please circle.]	
Does the accident need to be referred to England Golf Governance Dept? YES NO	
Date:	Time:
Signature of Recorder:	
<p><b>Data protection:</b></p> <p><b>OLCGA</b> and England Golf Governance Department may use the information in this form (together with other information they obtain as a result of any investigation) to investigate the alleged incident and to take whatever action is deemed appropriate, in accordance with their Children and Young People Safeguarding Policy and Procedures.</p> <p>Strict confidentiality will be maintained, and information will only be shared on a "need to know" basis in the interests of safeguarding. This may involve disclosing certain information to a few organisations and individuals including relevant clubs and County bodies, individuals that are the subject of an investigation and/or Statutory agencies such as the Police and Children's Social Care.</p>	

## Appendix 10



### Oxfordshire Ladies' Golf Association

#### Junior Profile Form:

Please click on this link to complete **OLCGA's** Junior Profile Form.

[www.golfgenius.com/pages/10251257940459684240](http://www.golfgenius.com/pages/10251257940459684240)

The details recorded are kept securely and accessible only to members of the **OLCGA** Executive Committee who require the information to perform their role.

The safety and welfare of juniors in our care is paramount, and it is therefore important that we are aware of any illness, medical condition, and other relevant health details in order that their best interests are addressed.

Please complete this form with our assurance that the information will be treated as confidential and will be deleted from our database when the junior is no longer registered with the county or, if still registered, when the consent to hold their data is withdrawn.

It is the responsibility of the Junior and their parent/guardian to notify **OLCGA** if any of the details change at any time.

The Profile Form also includes consent to Photography & Videos, Codes of Conduct for both Parents/Guardians & Young Golfers, and to receiving communications via our messaging service.

## Appendix 11



### OLCGA - Guidance for Parents/Guardians

**OLCGA** is delighted to welcome you and your child to what we hope is the first of many events in which you will participate.

The positive effect of your support, as a parent, cannot be overstated. Your behaviour has a real influence on the way your child experiences golf.

To begin with – why is your child showing an interest in the sport? Is it to learn a new game? Is it to hang out with their friends? Is it because they did it in school and liked it? Or is it because you play?

Please make sure they are playing for their own reasons and not yours.

To enable us to provide the best possible experience for you and your child, we kindly request that you read through our guidance documents; everything is available to view or download on our website [www.olcga.org.uk](http://www.olcga.org.uk) under Safeguarding Policy & Procedures.

- Take an interest in your child's progress in the sport and be supportive.
- Familiarise yourself with **OLCGA's** Safeguarding Policy.
- Familiarise yourself with
  - a. Codes of Conduct for parents, coaches, children, and young people.
  - b. Transport Policy.
  - c. Changing Room Policy.
  - d. Photography, Videoing, and the use of Social Media Policies.
- Complete the online Junior Profile Form which will enable **OLCGA** to cater for any needs that your child may have (e.g. medical conditions and medications, allergies, learning difficulties etc.), as well as contact you in the unlikely event of an emergency.
- Go through the attached Code of Conduct **with** your child and return a signed copy to the county.
- Be punctual when dropping off and picking up your child from coaching/events. It is important to communicate with the county representative if collecting your child after an event/coaching session may cause a problem.



- Introduce yourself to the adults involved in the supervision of your child.
- When leaving your child, make sure they have the necessary provisions for the day, including the ability to meet the requirements of changing weather conditions. Please ensure that your mobile is switched on so that you can be contacted in an emergency.
- Encourage your child to take part and support county activities such as coaching & competitions.
- Help your child to arrange golf with other juniors away from county organised activities so they have someone with whom to play golf.

As a parent/guardian you are encouraged to:

- Discuss any concerns regarding the organisation of activities or the behaviour of adults towards your child with the County Welfare Officer, who will treat any concerns you or your child may have in the strictest confidence.
- England Golf Lead Safeguarding Officer is also available for advice: 01526 351824

### **County Welfare Officer**

**Heather Slevin**

## Appendix 12



### OLCGA - Managing Young People on Away Trips

The following provides good practice guidance for taking teams on an away fixture for a day (not overnight):

- appoint a Team Manager with clear roles and responsibilities.
- appoint a designated safeguarding lead contact (not the Team Manager) who is appropriately trained and competent for the role and responsibilities.
- establish well in advance where the fixture is.
- ensure you have sufficient volunteers to manage and look after the young people.
- obtain written permission from the parents/guardian for participation, transporting and supervising. An up-to-date photograph of each child must be attached to the child's consent form (for use in the event of any child going missing)
- ensure that a welfare plan has been written and communicated to participants and those in attendance.
- ensure all volunteers responsible for the young people have been DBS checked to the appropriate level and have had appropriate safeguarding training.
- ensure that a risk assessment has been conducted.
- ensure that there is a contact available e.g. a junior committee member who is not travelling away, who will act as the key contact point if required.

#### Overnight Stays:

Those responsible for organising overnight stays should establish the purpose of the trip, confirm the dates, location, and duration. You should also conduct a risk assessment, identify suitable venues and facilities for both fixtures and accommodation and consider the following:

- Purpose of the trip.
- Who will be going?
- How much will it cost? How much spending money is required?
- What insurance cover is required?
- Supervision of children, both playing and non-playing time.
- Catering for all food requirements.
- Communication with parents (see above)
- Ensure a list of the team and volunteers is left, with contact number and address of the accommodation.
- Ensure that there are emergency contact numbers for all the team and volunteers.
- An itinerary giving as much detail as possible.
- Emergency procedures and telephone contacts.
- Codes of contact for both volunteers and children.
- Welfare and child protection procedures.

**Accommodation:**

- Whatever the accommodation, the Team Manager should ensure that the children are safe. Discuss your code of conduct and discipline policy with the volunteers at the accommodation. All children must know which rooms volunteers are in and how to contact them if required.
- If rooms are equipped with satellite TV, inappropriate programmes may be available. It may be possible to have these programmes disconnected.
- If rooms have fridges, all alcohol must be removed.
- Check the accommodation policy for extras on bills, breakages, and lost keys. All accommodation must be clean and with access to sufficient toilet and bathing facilities.
- It is not acceptable:
  - For children to share a bed
  - For male and female children to share a room
  - For volunteers to share a room with children
- Checks must be made to ensure that the needs of children with disabilities are met. For wheelchair users, it is important to check access to the building, bedroom, and bathroom facilities.

## Appendix 13



### OLCGA - Social Media Guidance

This guidance gives procedures that will support and underpin the use of social networking and other online services within **OLCGA**. It is important that all members, volunteers, coaches, officials/referees, or anyone working on behalf of **OLCGA** are aware of this policy and agree to the following terms.

#### Advice for Individuals

- Do not accept children as contacts on social networking sites if you hold a position of trust with children/young people.
- Where contact through social networking sites is used for professional reasons, restrict the communication to professional content and obtain written consent from parents prior to establishing contact.
- Include a third party in any communications to children, e.g. copy parents into communications.
- Use the privacy settings on the various sites to ensure that your content will only be viewed by appropriate people.
- Ensure that any content you place on a social networking site is age appropriate. Do not use the site to criticise or abuse others.
- Know where to direct junior members and their parents for information.
- Know how to report concerns.
- Know how to keep data safe and secure. This should include the personal contact data of individuals, such as mobile numbers, email addresses and social networking profiles.

#### Advice for Children

- Consider carefully whom you invite to be your friend online and make sure they are whom you believe them to be.
- There are websites that offer advice about protecting yourself online, such as [www.ceop.gov.uk](http://www.ceop.gov.uk) and [www.childnet.com](http://www.childnet.com)
- Make sure you use privacy settings so that only friends can view your profile.
- Remember that anything you post on websites may be shared with people you do not know.
- Never post comments, photos, videos, etc., that may upset someone, that are untrue or that are hurtful. Think about whether you may regret posting the content later.
- If you are worried or upset about something that has been posted about you, or by texts you receive from other juniors or adults involved with the county, raise this with your County Welfare Officer. Alternatively contact your National Governing Body Lead Safeguarding Officer (England Golf Tel: 01526 351851). Do not suffer alone. You will be listened to and your concerns will be taken seriously.

- If you want to talk to someone anonymously, call Childline on 0800 1111, or contact them on the web at [www.childline.org.uk](http://www.childline.org.uk) . You can also call the NSPCC on 0808 800 5000.

### **Advice for Parents**

- Make yourself knowledgeable about social networking platforms and how they work.
- Go on the internet with your child and agree what sites are acceptable to visit. Regularly check that they are staying within the agreed limits.
- Encourage your child to talk to you about what they have been doing on the internet.
- Make sure they feel able to speak to you if they ever feel uncomfortable, upset or threatened by anything they see online.
- Encourage children to look out for each other when they are online. Explain that it is all part of staying safe and having fun together.
- Explain to children that it is not safe to reveal personal information, such as their name, address, or phone number on the internet. Encourage them to use a cool nickname rather than their own name.
- Attachments and links in emails can contain viruses and may expose children and young people to inappropriate material. Teach children to only open attachments or click on links from people they know.

### **Further Advice for Parents of Young Golfers**

- If you are concerned about any texts, social networking posts or any other use of communication technology by members of the county, volunteers, or coaches, raise this with the County Welfare Officer. They will investigate the matter and take appropriate action. Alternatively contact England Golf Lead Safeguarding Officer Tel 01526 351824.
- In addition to reporting concerns to England Golf (National Governing Body), you should immediately report possible online abuse to the Child Exploitation and Online Protection Centre (CEOP) or the police. Law enforcement agencies and the internet service provider may need to take urgent steps to locate a child and/or remove the content from the internet. Where a young person may be in immediate danger, dial 999.
- Do not post/send negative or critical comments or messages about other children, coaching staff, or volunteers. If you have concerns about a person, these should be raised using appropriate channels within the county and not using social media.
- If you wish to speak to an external organisation for advice, you can contact the NSPCC helpline on 0808 800 5000.

## Appendix 14



### OLCGA - Whistleblowing Policy

Safeguarding children, young people and adults at risk requires everyone to be committed to the highest possible standards of openness, integrity and accountability.

As a county, we are committed to encouraging and maintaining a culture where people feel able to raise a genuine safeguarding concern and are confident that it will be taken seriously.

You may be the first to recognise that something is wrong but feel that you cannot express your concerns as this may be disloyal to your colleagues or you may that you will be the victim of harassment or victimisation as a result.

Children, Young People and Adults at risk need someone like you to safeguard their welfare.

#### What is whistle blowing?

In the context of safeguarding, "whistle blowing" is when someone raises a concern about the well-being of a child or an adult at risk.

A whistle blower may be a player, a volunteer, a coach, an official, a parent or a member of the public.

#### Reasons for whistle blowing:

Those involved in sport must acknowledge their individual responsibilities and bring matters of concern to the attention of the relevant people and/or agencies. Although this can be difficult it is particularly important where the welfare of children may be at risk.

Every individual has a responsibility for raising concerns about unacceptable practice or behaviour:

- To protect or reduce risk to others.
- To prevent a problem from becoming worse or more widespread
- To prevent becoming implicated yourself

#### What prevents those individuals from whistle blowing?

- Starting a chain of events that they have no control of
- Disrupting work or training
- Fear of getting it wrong or making a mistake.
- Fear of repercussions

- Fear of damaging careers
- Fear of not being believed.

If a child or an adult at risk is in immediate danger or risk of harm, the police should be contacted by calling 999.

Where a child or an adult at risk is not in immediate danger the first person you should report your suspicion or allegation to is your County Welfare Officer. If for any reason you cannot, or do not wish to report the matter to your County Welfare Officer please contact the England Golf Lead Safeguarding Officer Ash Wilson on 01526 351 824 or email [safeguarding@englandgolf.org](mailto:safeguarding@englandgolf.org). Alternatively, you can contact the Local Authority Designated Officer (LADO) or the NSPCC on 0800 800 5000.

### **Information to include when raising a concern.**

The whistle blower should provide as much information as possible regarding the incident or circumstance which has given rise to the concern, including:

- their name and contact details (unless they wish to remain anonymous)
- names of individuals involved.
- date, time, and location of incident/circumstance and
- whether any witnesses were present.

**OLCGA** assures that all involved will be treated fairly and that all concerns will be carefully considered. In cases where suspicions prove to be unfounded, no action will be taken against those who report their concerns, provided they acted in good faith and without malicious intent.

### **What happens next?**

- You should be given information on the nature and progress of any enquiries – this may vary depending on the nature and result of the investigations.
- All concerns will be treated in confidence. During the process of investigating the matter, every effort will be made to keep the identity of those raising the concern to the minimum number of individuals practicable.
- Your County has a responsibility to protect you from harassment or victimisation
- No action will be taken against you if the concern proves to be unfounded and was raised in good faith.
- Malicious allegations may be considered a disciplinary offence

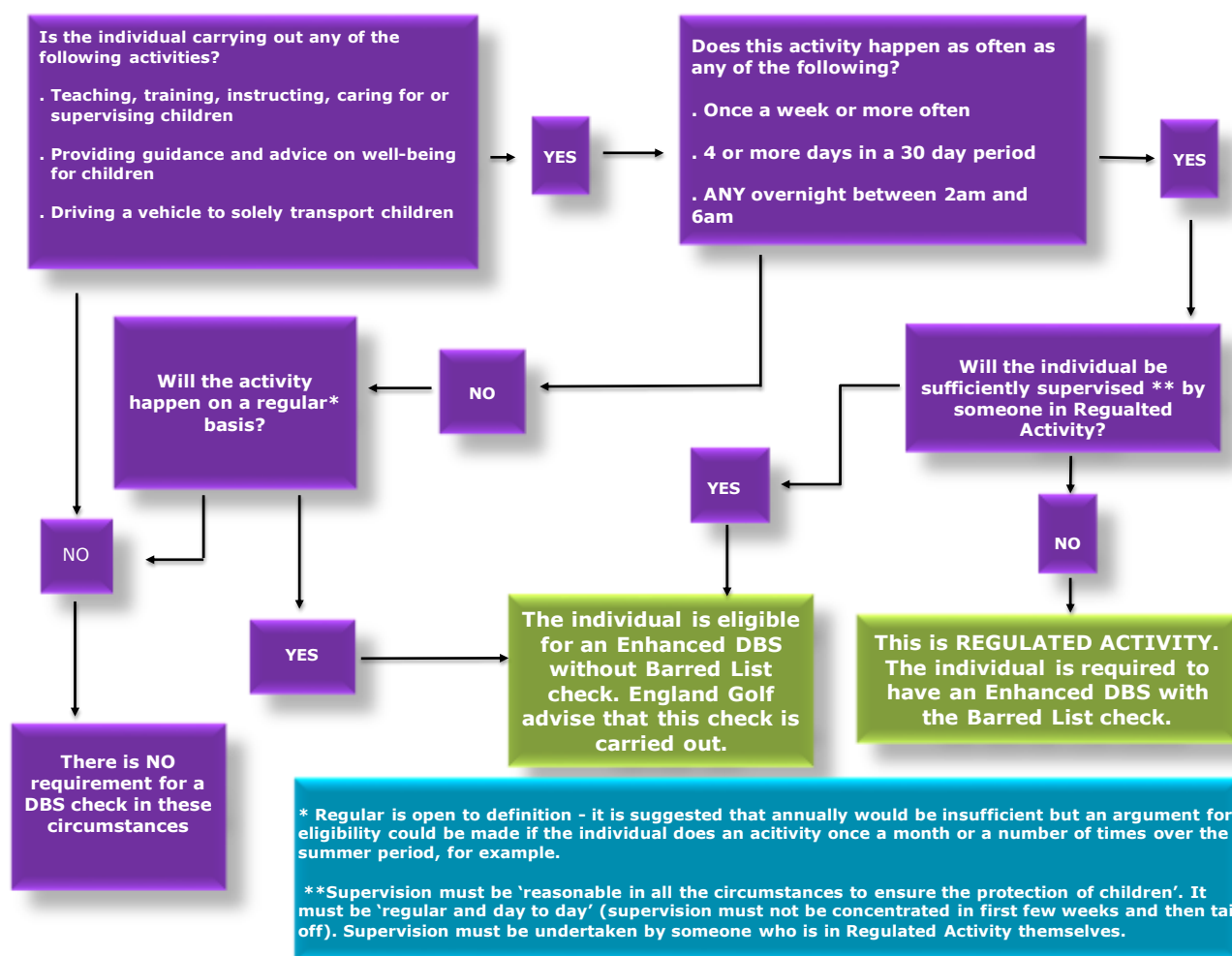
The Public Interest Disclosure Act 1998 protects whistle blowers from victimisation, discipline, or dismissal where they raise genuine concerns of misconduct or malpractice.

If the whistle blower does not believe that the concern has been dealt with appropriately and wishes to speak to someone outside the county or the England Golf Governance Department the NSPCC Whistleblowing advice line should be contacted on 0800 028 0285 or by emailing [help@nspcc.org.uk](mailto:help@nspcc.org.uk).

## Appendix 15



# England Golf DBS Flowchart



MAY 18



## Appendix 16



### OLCGA - CATEGORIES OF CHILD ABUSE

**Abuse can happen on any occasion or in any place where children and young people are present.**

Child abuse is any form of physical, emotional, or sexual mistreatment or lack of care that leads to injury or harm. Children may be abused in a family or in an institutional or community setting by those known to them or, more rarely, by a stranger. Children can be abused by adults, either male or female, or by other children.

Safeguarding is defined as:

- Protecting children from maltreatment
- Preventing impairment of children's health or development
- Ensuring that children are growing up in circumstances consistent with the provision of safe and effective care; and
- Taking action to enable all children to have the best life chances.

Child Protection is the activity that is undertaken to protect specific children who are suffering or are likely to suffer significant harm.

There are 4 main types of abuse: neglect, physical abuse, sexual abuse, and emotional abuse. Children and young people can also be harmed through poor practice and bullying within a sport setting.

**Neglect** is when adults consistently or repeatedly fail to meet a child's basic physical and/or psychological needs which could result in the serious impairment of the child's health or development e.g. failure to provide adequate food, shelter and clothing; failing to protect a child from physical harm or danger; or the failure to ensure access to appropriate medical care or treatment. It may also include refusal to give love, affection, and attention.

Examples in sport could include a coach or supervisor repeatedly failing to ensure children are safe, exposing them to undue cold, heat or extreme weather conditions without ensuring adequate clothing or hydration; exposing them to unnecessary risk of injury e.g. by ignoring safe practice guidelines, failing to ensure the use of safety equipment, or by requiring young people to participate when injured or unwell.

**Physical abuse** is when someone physically hurts or injures children by hitting, shaking, throwing, poisoning, burning, biting, scalding, suffocating, drowning or otherwise causing harm. Physical harm may also be caused when a parent or guardian feigns the symptoms of, or deliberately causes, ill health to a child whom they are looking after.

Examples in sport may be when the nature and intensity of training or competition exceeds the capacity of the child's immature and growing body; where coaches encourage the use of drugs or harmful substances to enhance performance or delay puberty; if athletes are required to participate when injured; or when sanctions used by coaches imposed involve inflicting pain.

**Sexual abuse** is where children and young people are abused by adults (both male and female) or other children who use them to meet their own sexual needs. This could include full sexual intercourse, masturbation, oral sex, anal intercourse, kissing and sexual fondling. Showing children pornographic material (books, videos, pictures) or taking pornographic images of them are also forms of sexual abuse.

Sexual abusers groom children & vulnerable adults, joining counties/organisations in order to create opportunities to abuse and, through being part of the structure, reduce the likelihood of being reported.

Examples in sport may include coaching techniques involving physical contact with children creating situations where sexual abuse can be disguised and may therefore go unnoticed. The power and authority of, or dependence on, the coach if misused, may also lead to abusive situations developing. Contacts made within sport and pursued e.g. through texts, Facebook or Twitter have been used to groom children for abuse.

**Child Sexual Exploitation** is a form of child sexual abuse. It occurs where an individual or group takes advantage of an imbalance of power to coerce, manipulate or deceive a child or young person under the age of 18 into sexual activity.

(a) in exchange for something the victim needs or wants, and/or

(b) for the financial advantage or increased status of the perpetrator or facilitator.

The victim may have been sexually exploited even if the sexual activity appears consensual. Child sexual exploitation does not always involve physical contact; it can also occur using technology.

**Emotional abuse** is the persistent emotional ill-treatment of a child to cause severe and persistent adverse effects on the child's emotional development. It may involve conveying to children that they are worthless or unloved, inadequate, or valued only insofar as they meet the needs of another person.

It may feature age or developmentally inappropriate expectations being imposed on children or even the over protection of a child. It may involve causing children to feel frightened or in danger by being constantly shouted at, threatened, or taunted which may make the child nervous and withdrawn. Some level of emotional abuse is involved in all types of ill-treatment of a child.

Examples in sport may include children who are subjected to constant criticism, name-calling, sarcasm, bullying, racism, or pressure to perform to unrealistically high expectations; or when their value or worth is dependent on sporting success or achievement.

## Appendix 17



### Safeguarding Children and Young People – A Short Guide

**OLCGA** is committed to ensure that the sport of golf is one within which children and young people involved can thrive and flourish in a safe environment and that all children, young people and adults at risk have a fun, safe and positive experience when playing golf.

**OLCGA** follows the England Golf Safeguarding Children and Young People Policy and procedures.

You may be thinking “**What has safeguarding got to do with me?**”

Government guidance makes it clear that ‘Safeguarding is everyone’s responsibility’.

Anyone who has a negative experience of sport at a young age is less likely to become a regular long-term participant. It is important for the future of the sport that children and young people have an enjoyable experience.

#### **Everyone has a part to play in making that happen.**

All adults should contribute to the county meeting its overall duty of care, be aware of our county’s safeguarding policy, and know what to do if they are concerned about a young person.

**OLCGA** asks everyone to please -

#### **Familiarise yourself with the OLCGA Safeguarding Policy.**

The full copy of the OLCGA Safeguarding Children and Young People Policy is available on our website [www.olcga.org.uk](http://www.olcga.org.uk) but below are some particular areas of pertinent information.

#### **1. OLCGA Codes of Conduct**

*Adults should always be aware that age related differences exist and conduct themselves in a manner that both recognises this and prioritises the welfare of children and young people.*

#### **2. Anti-Bullying Policy**

*OLCGA believes that every effort must be made to eradicate bullying in all its forms. The County will not tolerate bullying in any of its forms during county matches, competitions, coaching or at any other time.*

### **3. Transport Policy**

*The county believes it is primarily the responsibility of parents/carers to transport their child/children to and from events.*

### **4. Changing Room Policy**

*The changing rooms are used by all members & visitors. Wherever possible adults will avoid changing or showering at the same time as children, but parents will be made aware that with limited changing room space there will be occasions when adults and children may need to share the facilities. Where a parent/carer does not consent to their child accessing the changing rooms, it is their responsibility to either supervise the child while in the changing rooms or ensure that they do not use them.*

### **5. Photography, Video, and the use of Social Media Policies**

*Think very carefully before contacting a young person via mobile phone, e-mail or social media.*

*Do not accept children as contacts on social networking sites if you hold a position of trust with children/young people.*

*In general stick to group communications, copy the communication to a parent and only communicate about organisational matters.*

## **What should I do if I am concerned about a child or young person?**

A concern may involve the behaviour of an adult towards a child, or something that has happened to the child outside county activities/events.

Children and young people may confide in adults they trust, in a place where they feel comfortable.

An allegation may range from verbal bullying to inappropriate contact online, to neglect or emotional abuse, to physical or sexual abuse.

If you are concerned about a child, it is not your responsibility to investigate further, but it is your responsibility to act on your concerns and share them.

Pass the information to the **OLCGA** County Welfare Officer who will follow the county's Safeguarding procedures.

Name: Heather Slevin  
Email Address: cwo.olcga@gmail.com  
Telephone Number: 01295 780513

If you believe the child is at immediate risk of harm, call the Police on 101 or 999.

Other useful contacts:

NSPCC 24-hour helpline Tel: 0808 800 5000

England Golf Lead Safeguarding Officer 01526 351824

## Appendix 18

### OLCGA - PHOTOGRAPHY POLICY

Whilst **OLCGA** does not seek to prohibit those with a legitimate interest in filming or photographing children participating in sporting activities it recognises that such activity should take place within an appropriate policy framework.

This policy applies at any **OLCGA** event at which children under the age of 18 are participating.

The welfare of children taking part in golf is paramount.

Children and their parents/guardian and/or **OLCGA** should have control over the images taken of children at county events.

The golfing activity should not be misused purely for the purpose of obtaining images of children.

Images should not be sexual or exploitative in nature or open to misinterpretation and misuse.

The identity of children in a published image should be protected so as not to make the children vulnerable. (If the name of an individual golfer is published with their photograph to celebrate an achievement other personal contact details should never accompany the picture).

#### **PROCEDURE:**

##### **Official/professional photographers and those using 'professional' equipment**

**OLCGA** requires that anyone wishing to take photographic or video images, at any county event at which children under the age of 18 are participating, in an official or professional capacity or using 'professional' camera or video equipment registers their details with the **OLCGA**. This must be done before carrying out any such activity on the golf course (including the practice ground) or surrounding area or in the clubhouse.

Once registered an identification label will be issued as confirmation of registration. Anyone found using photographic or video equipment without an appropriate identification label will be questioned.

**OLCGA** reserves the right to refuse to grant permission to take photographic or video images if it sees fit.

Photographers must obtain consent from parents to take and use their child's image.

##### **Parents/guardian/family members of competitors**

Parents, guardians, and family members taking occasional informal photographs with mobile devices of their own child, ward, or family member at an **OLCGA** event do not need to register their details with the county.

If such photographs include other children (e.g. at a prize presentation) they should not be publicly displayed or published on social media unless the prior permission of the parents/guardians of all the children in the photographs has been obtained.

If competitors or parents have any concerns, they should raise them by contacting OLCGA immediately.

OLCGA will notify the relevant authorities should it have any doubts as to the authenticity of any individual taking photographs.

## Appendix 19



### OLCGA - ANTI-BULLYING POLICY

#### OLCGA will:

- recognise its duty of care & responsibility to safeguard participants from harm.
- promote and implement this anti-bullying policy in addition to our safeguarding policy and procedures.
- seek to ensure that bullying behaviour is not accepted or condoned.
- require all members/volunteers of the county junior section to be given information about, and sign up to, this policy.
- take action to investigate and respond to any alleged incidents of bullying.
- encourage and facilitate children and young people to play an active part in developing and adopting a code of conduct to address bullying.
- ensure that volunteers and coaches are given access to information, guidance and/or training on bullying.

#### Each participant, coach, volunteer, or official will:

- respect every child's need for, and rights to, a play environment where safety, security, praise, recognition, and opportunity for taking responsibility are available.
- respect the feelings and views of others.
- recognise that everyone is important and that our differences make each of us special and should be valued.
- show appreciation of others by acknowledging individual qualities, contributions, and progress.
- be committed to the early identification of bullying, and prompt and collective action to deal with it.
- ensure safety by having rules and practices carefully explained and displayed for all to see.
- report incidents of bullying they see; if you do not, you are condoning bullying.

#### Bullying

- all forms of bullying will be addressed.
- everybody in **OLCGA** has a responsibility to work together to stop bullying.
- bullying can include online as well as offline behaviour.
- bullying can include:
  - physical pushing, kicking, hitting, pinching etc.
  - name calling, sarcasm, spreading rumours, persistent teasing and emotional torment through ridicule, humiliation, or the continual ignoring of individuals

- posting of derogatory or abusive comments, videos, or images on social network sites
- racial taunts, graffiti, gestures, sectarianism - sexual comments, suggestions, or behaviour
- unwanted physical contact
- children with a disability, from ethnic minorities, young people who are gay or lesbian, or those with learning difficulties are more vulnerable to this form of abuse and are more likely to be targeted.

### **Support to the child**

- children should know who will listen to and support them.
- systems should be established to open the door to children wishing to talk about bullying or any other issue that affects them.
- potential barriers to talking (including those associated with a child's disability or impairment) need to be identified and addressed at the outset to enable children to approach adults for help.
- children should have access to helpline numbers.
- anyone who reports an incident of bullying will be listened to and supported.
- any reported incident of bullying will be investigated objectively and will involve listening carefully to all those involved.
- children being bullied will be supported and assistance given to uphold their right to play and live in a safe environment which allows their healthy development.
- those who bully will be supported and encouraged to stop bullying.
- sanctions for those bullying others that involve long periods of isolation, or which diminish and make individuals look or feel foolish in front of others, will be avoided.

### **Support to the parents/guardians**

- parents/guardians to be advised on **OLCGA's** bullying policy and practise.
- any incident of bullying will be discussed with the child's parents/guardian.
- parents/guardian will be consulted on action to be taken (for both victim and bully) and agreements made as to what action should be taken.
- information and advice on coping with bullying will be made available.
- support should be offered to the parents/guardian including information on other agencies or support lines.

### **Useful contacts**

OLCGA County Welfare Officer – [cwo.olcga@gmail.com](mailto:cwo.olcga@gmail.com)  
England Golf Lead Safeguarding Officer 01526 351824  
NSPCC Helpline 0808 800 5000  
ChildLine 0800 1111 / [www.childline.org.uk](http://www.childline.org.uk)  
Kidscape [www.kidscape.org.uk](http://www.kidscape.org.uk)  
Anti-Bullying Alliance [www.antibullyingalliance.org.uk](http://www.antibullyingalliance.org.uk)